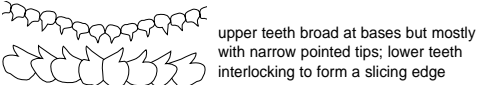
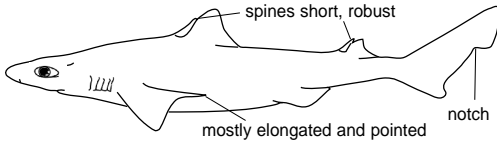


Common deepwater dogfish sharks of Australia

Endeavour dogfishes 37 020902

Centrophorus harrissoni, *C. moluccensis*, *C. uyato*
Other names: dumb shark, endeavour dogshark, gulper shark, Harrison's dogfish, southern dogfish, toughskin dogfish

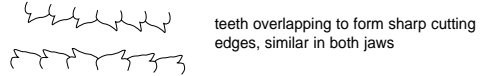
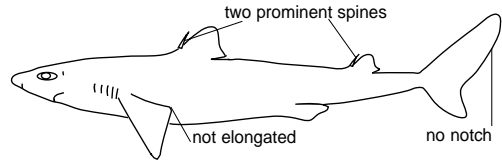


Size: up to 110 cm, typically 60–80 cm

Distribution: eastern, southern and western Australia; 50–1400 m, mainly 300–650 m

Greeneye dogfishes 37 020901

Squalus spp
Other names: dogfish, dogshark, grey spiny dogfish, piked spurdog, spikey dogfish, spurdog

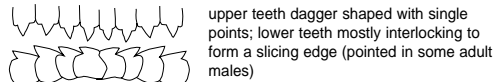
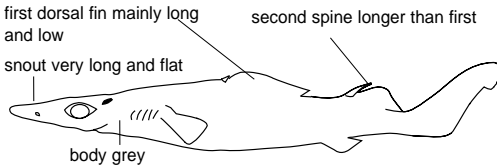


Size: up to 100 cm

Distribution: most Australian waters; down to 600 m

Platypus sharks 37 020905

Deania calcea, *D. quadrispinosa*
Other names: birdbeak dogfish, brier dogshark, longsnout dogfish, pearl shark

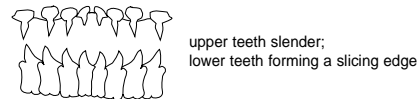
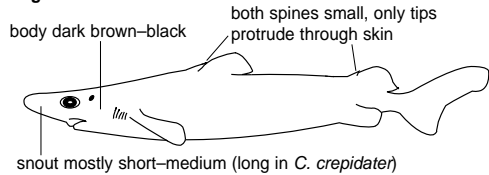


Size: up to 115 cm, typically 65–85 cm

Distribution: eastern, southern and western Australia; 70–1450 m, mainly 400–900 m

Smallspine dogfishes 37 020906

Centroscymnus crepidater, *C. plunketi*, *C. coelolepis*, *C. owstoni*
Other names: black shark, golden dogfish, longnose velvet dogfish, Owston's dogfish, Plunket's dogfish, Portuguese dogfish

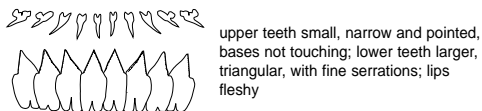
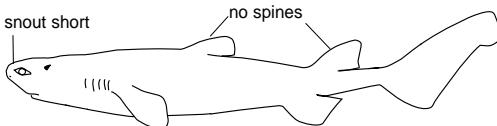


Size: up to 170 cm

Distribution: eastern, southern and western Australia; 240–1550 m, mainly deeper than 600 m

Black shark 37 020002

Dalatias licha
Other names: kitefin shark, seal shark

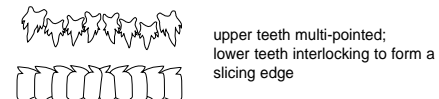
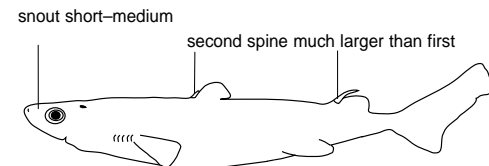


Size: up to 160 cm

Distribution: eastern, southern and western Australia; 40–1800 m, mainly 450–850 m

Lantern sharks 37 020907

Etmopterus spp
Other names: black shark, lucifer shark, seal shark



Size: up to 70 cm

Distribution: most Australian waters; 180–1800 m